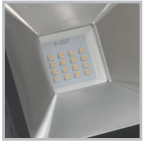
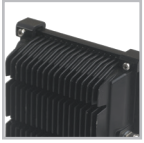


SEDNA[®]

l i g h t i n g



IP65

5Yr

Part L
Compliant

RoHS
Compliant

ECA
Compliant

LED Hercules™ Series Flood Lighting - Nichia® LED Chips

The set up of conventional flood lights with long periods of use and inconvenient re-lamping procedures means it is recognised as one of the most beneficial exploits of LED technology. An integrated unit using specifically designed **Nichia® LEDs for durability and efficiency of 100lm/W**. Other benefits include minimised attraction to nocturnal wildlife due to non-ultraviolet light, high light output even in cold temperatures and a wide range to suit round the clock environments.

Features **rear mounted bracket adjustable around 270°**, suitable for post or wall mounting, with adjustable positioning & 3mm toughened glass cover.

Product information

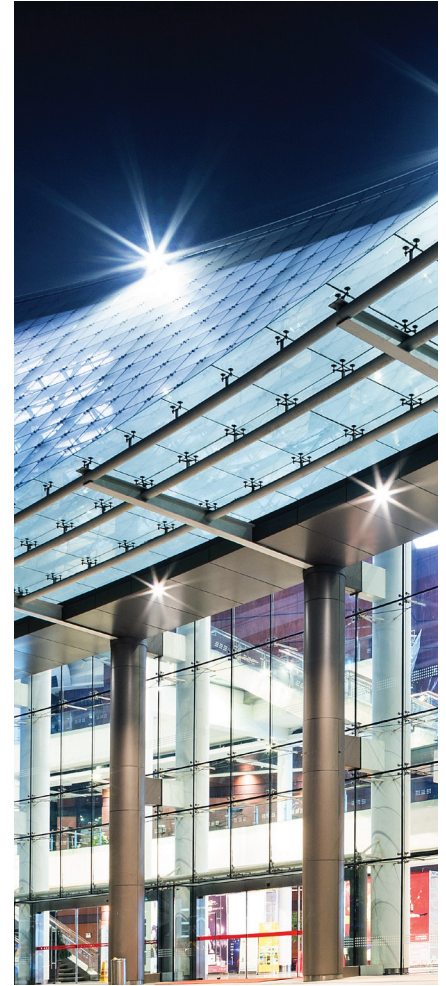
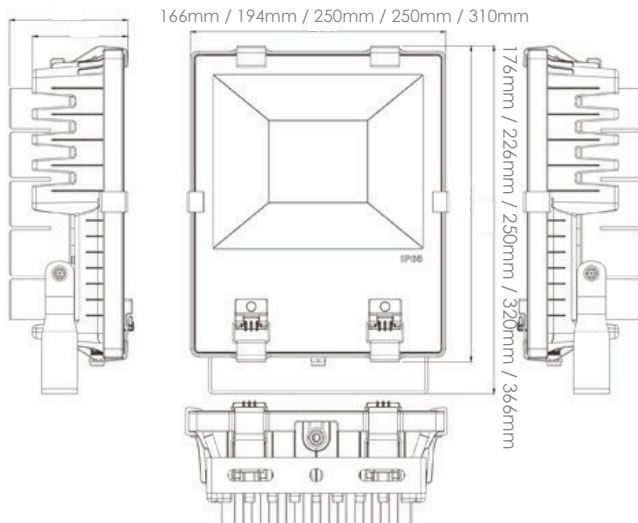
Durable with rated life span of +40,000 hours / No UV or IR emissions / Instant Illumination & Flicker free / CE & RoHS international standards / Environmentally friendly & part recyclable: no mercury or other hazardous materials used / Medium duty diecast aluminum housing & 3mm toughened glass cover

Code	Nominal Size	Power	Lumen Output	Unit Weight	Equivalent
SDHFL-20	176mm x 166mm	20W	1800-2000lm	0.7kg	80W Tungsten
SDHFL-50	226mm x 194mm	50W	4600-5000lm	1.7kg	150W Tungsten
SDHFL-70	250mm x 250mm	70W	6600-7000lm	2.5kg	220W Tungsten
SDHFL-100	320mm x 250mm	100W	9600-10,000lm	3.4kg	150W MHL
SDHFL-150	366mm x 310mm	150W	13,400-15,000lm	3.4kg	250W SON



Cool White

Other colours are available on request



Technical Specifications

Beam Angle: 120°

Luminous Efficacy: up to 100lm/W

Input Voltage: AC 110 - 280V

High Colour Rendering Index: >80Ra

Power Factor: >0.95

LED Type: Nichia SMD LEDs

Operating Temperature: -20°C to 50°C

Colour Temperature: CW 6500-7000K

LED Hercules™

Heavy Duty Flood Lighting

Cool White