

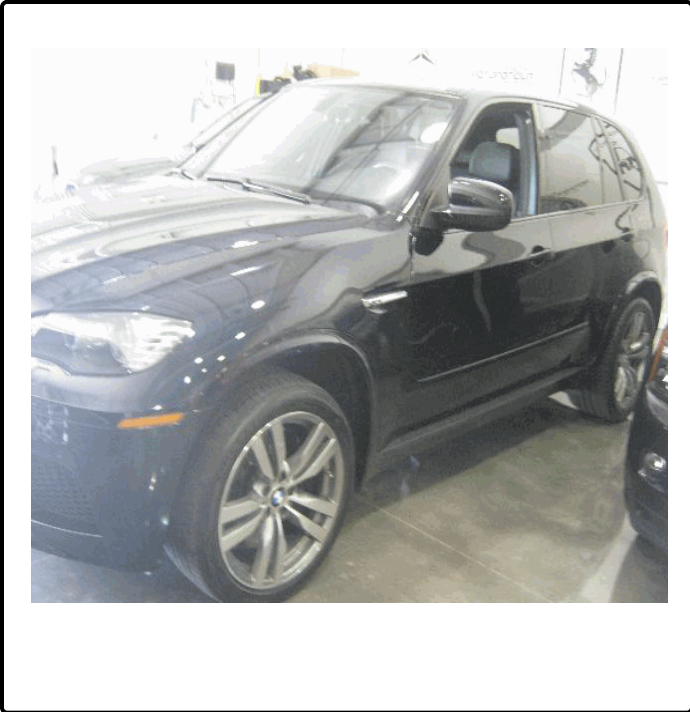
Condition Report

Completed by Alliance Inspection Management



2010 BMW X5 M

VIN: 5YMGY0C54ALK25365



Vehicle Information

Year : 2010
Brand : BMW
Model : X5 M
Series :
Body Type : Wagon / Hatchback
Drive Type : AWD
Engine : 4.4L, 8, Gas
Transmission : 6-Speed A/T
Mileage : 24368
Exterior Color : Blue
Trim Color : Black
Trim Type : Leather

Inspection Details

Inspection Date : 01 Apr 2014 2:12 PM
Inspection ID : 440147
Inspector : 3661

Grade : A

Inspection Notes : spare tire size 155/80R19 listed on tire label, no spare in vehicle

Vehicle Accessories

- A/C
- Air Suspension
- Bucket Seats
- Cruise Control
- Front Reading Lamps
- Leather Seats
- Navigation System
- Power Door Locks
- Power Windows
- Rear Parking Aid
- Tire Pressure Monitor
- Trip Computer
- ABS
- Aluminum Wheels
- CD Player
- Daytime Running Lights
- Heated Mirrors
- Leather Steering Wheel
- Panoramic Roof
- Power Driver Seat
- Premium Sound System
- Rear Reading Lamps
- Tires - Front Performance
- Turbocharged
- AM/FM Stereo
- Auxiliary Audio Input
- Child Safety Locks
- Driver Air Bag
- Intermittent Wipers
- MP3 Player
- Pass-Through Rear Seat
- Power Passenger Seat
- Privacy Glass
- Rear Spoiler
- Tires - Rear Performance
- Adjustable Steering Wheel
- Brake Assist
- Climate Control
- Engine Immobilizer
- Keyless Start
- Mirror Memory
- Passenger Air Bag
- Power Steering
- Rear Head Air Bag
- Sun/Moon Roof
- Traction Control

Tire Information

| | Manufacturer | Size | Depth | | Manufacturer | Size | Depth |
|--------------|--------------|---------------------|-------|---|--------------|-----------|-------|
| Left Front : | Bridgestone | 275/40-20 | 5/32 | Right Front : | Bridgestone | 275/40-20 | 4/32 |
| Left Rear : | Bridgestone | 315/35-20 | 5/32 | Right Rear : | Bridgestone | 315/35-20 | 5/32 |
| Spare : | | Tire Does Not Exist | | *Tire Depth of 5/32 or greater is considered normal | | | |

Vehicle Condition

Wear and Tear

| | | | |
|----------|--------------------|-------------------|------------|
| 1 | Front Bumper Cover | Bug Damage | Acceptable |
| 2 | Left Rear Door | Scratch Light | 2" to 3" |
| 3 | Right Rear Wheel | Chipped | 1 |
| 4 | Right Rear Door | Dent/No Paint Dmg | 1" to 2" |
| 5 | Right Front Wheel | Curb Rash | 1/2" to 1" |

Condition Report

Completed by Alliance Inspection Management



2010 BMW X5 M

VIN: 5YMGY0C54ALK25365

Vehicle Inspection Points

Legend: ● Item inspected and is ok ● Item inspected and contains an issue ○ Item is not present or could not be inspected

Exterior

| | | | |
|---|---|--|---|
| Vehicle Identification Number On Door Jam | ● | Vehicle Identification Number On Dashboard | ● |
| Front Lamps | ● | Rear Lamps | ● |
| Side Marker | ● | Frame / Unibody | ● |
| Roof Rack | ○ | Door And Side Moldings | ● |
| Wiper Blades/Arms | ● | Check Engine Compartment for Fluid Leaks | ● |
| Check Transmission For Leaks | ● | Battery | ● |
| Fluid Levels | ● | Belts/Hoses | ● |
| Emission Sticker | ● | | |

Interior

| | | | |
|--------------------------------|---|-----------------------------------|---|
| Power Door Locks | ● | Alarm | ● |
| Back up Camera | ● | Navigation/Entertainment System | ● |
| Owners Manual | ● | CD/DVD | ● |
| Radio/Speakers | ● | Cooled/Heated Seats | ● |
| AC/Heater | ● | Trunk Release | ● |
| Tilt Steering Column Functions | ● | Parking Brake | ● |
| Dome Light | ● | Knobs, Buttons and Other Controls | ● |
| Horn Functions | ● | Hood Release | ● |
| Hazard Lights | ● | Power Mirrors | ● |
| Power Seats | ● | Power Sunroof | ● |
| Seatbelts | ● | Power Windows | ● |
| Carpet - Front | ● | Warning Lights | ● |
| Headliner Condition | ● | Convertible Top Operational | ○ |
| Interior Trim | ● | Cargo Area Carpet | ● |
| First Aid Kit If Applicable | ● | Spare Tire | ● |
| | | Notes: Missing | ● |
| Tailgate Closing Assist | ● | Toolkit Complete | ● |
| Carpet - Rear | ● | | |

Date : 01 Apr 2014

Signature : _____

V1.3B2B

Condition Report

Completed by Alliance Inspection Management

2010 BMW X5 M

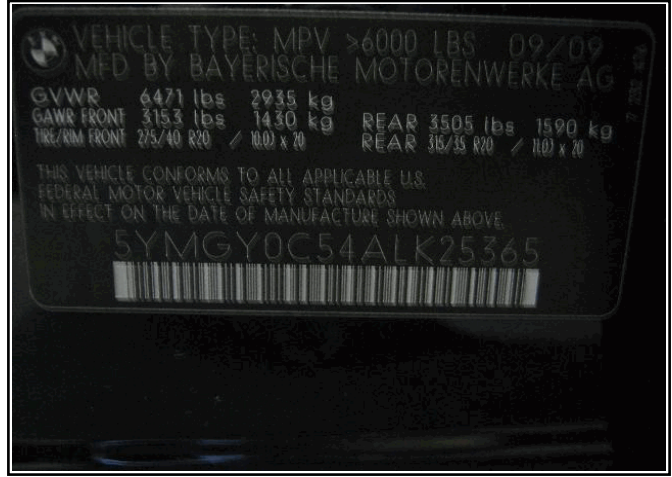
VIN: 5YMGY0C54ALK25365

Vehicle Pictures

Picture Description : **Front Interior**



Picture Description : **VIN**



Picture Description : **Front Interior**



Picture Description : **Left Front Corner**



Picture Description : **Cargo Area**



Picture Description : **Front Interior**



Condition Report

Completed by Alliance Inspection Management

2010 BMW X5 M

VIN: 5YMGY0C54ALK25365

Picture Description : **Front Interior**



Picture Description : **Wheel**



Picture Description : **Front Interior**



Picture Description : **Front Interior**



Picture Description : **Front Interior**



Picture Description : **Wheel**



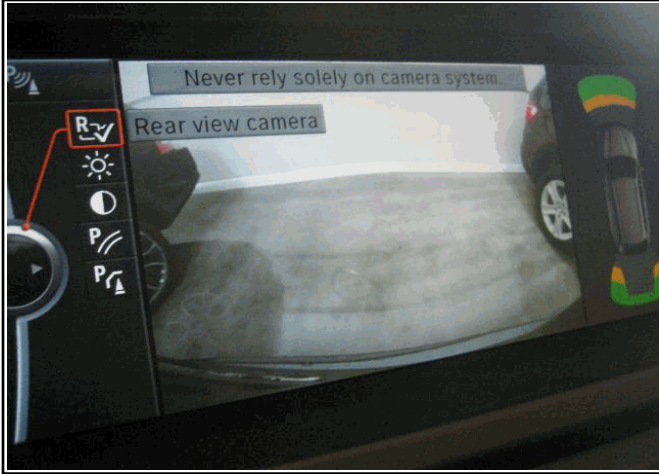
Condition Report

Completed by Alliance Inspection Management

2010 BMW X5 M

VIN: 5YMGY0C54ALK25365

Picture Description : **Front Interior**



Picture Description : **Wheel**



Picture Description : **Front Interior**



Picture Description : **Front Interior**



Picture Description : **Front Interior**



Picture Description : **Right Rear Corner**



Condition Report

Completed by Alliance Inspection Management

2010 BMW X5 M

VIN: 5YMGY0C54ALK25365

Picture Description : **Front Interior**



Picture Description : **Odometer**



Picture Description : **Dashboard**



Picture Description : **Wheel**



Condition Report

Completed by Alliance Inspection Management



2010 BMW X5 M

VIN: 5YMGY0C54ALK25365

Damage Pictures

Picture Description : **No Picture**

